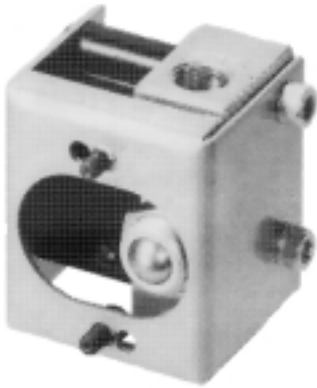


OPERATOR'S MANUAL

ARO PNEUMATIC LOGIC CONTROL LOGIC FUNCTION ASSEMBLY

PANEL MOUNTED PNEUMATIC CONTROL KIT

MODEL

59064
59064-1REVISED: 9-29-00
PN: 58999-032
FORM: 4504**OPERATING PRESSURE RANGE**
30 - 150 p.s.i.g. (2.1 - 10.3 bar)**TEMPERATURE RANGE**
+32° to +160° F (0° - 71° C)**FLOW CHARACTERISTICS**
Flow at 100 p.s.i.g. = 12 c.f.m. free air.
Capacity Factory Cv = 0.196**INSTALLATION**

Pressure regulation is recommended for applications where optimum repeatability is required. Lubrication is not required. Filtration is recommended to assure a clean, dry air supply.

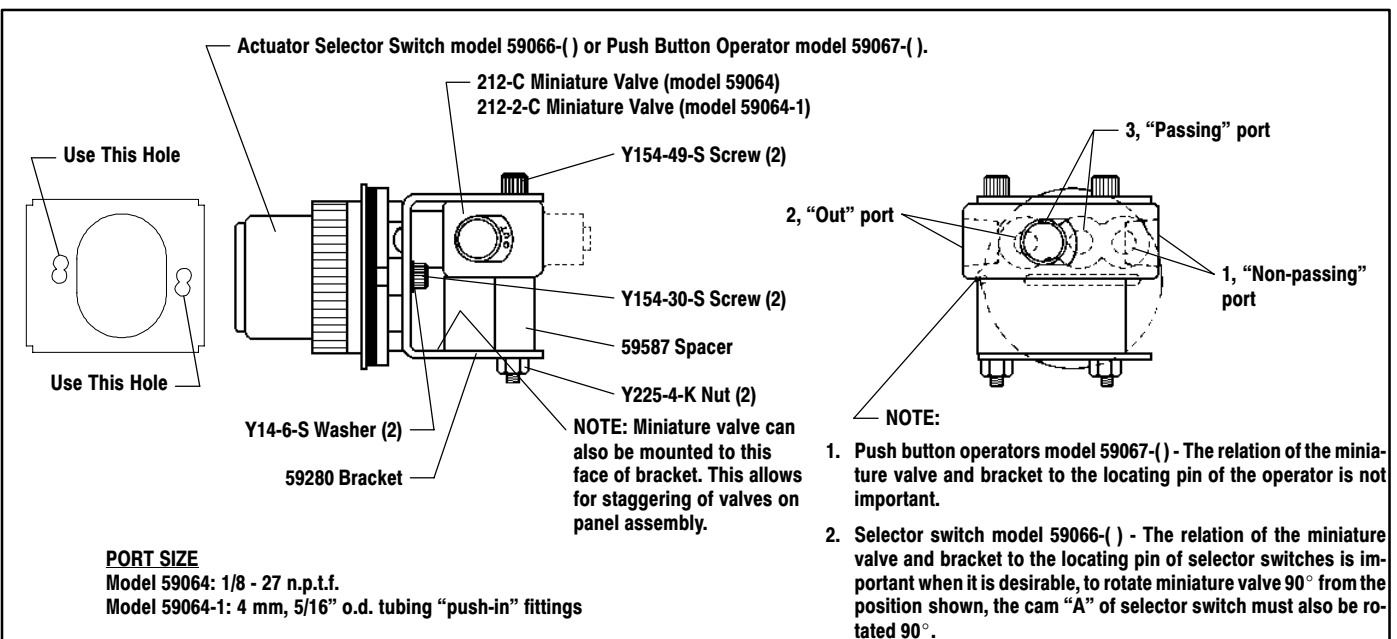
VALVE FUNCTION	PORT DESIGNATION	VALVE SYMBOL
3-WAY NON-PASSING	1 = INPUT / SUPPLY 3 = EXHAUST 2 = OUTPUT	
3-WAY PASSING	1 = EXHAUST 3 = INPUT / SUPPLY 2 = OUTPUT	
3-WAY MP	1 = INPUT / SUPPLY 3 = INPUT / SUPPLY 2 = OUTPUT	
2-WAY NON-PASSING	1 = INPUT / SUPPLY 3 = PLUGGED 2 = OUTPUT	
2-WAY PASSING	1 = PLUGGED 3 = INPUT / SUPPLY 2 = OUTPUT	
BLEEDER NON-PASSING	1 = INPUT 3 = NOT CONNECTED 2 = EXHAUST	
BLEEDER PASSING	1 = NOT CONNECTED 3 = INPUT 2 = EXHAUST	

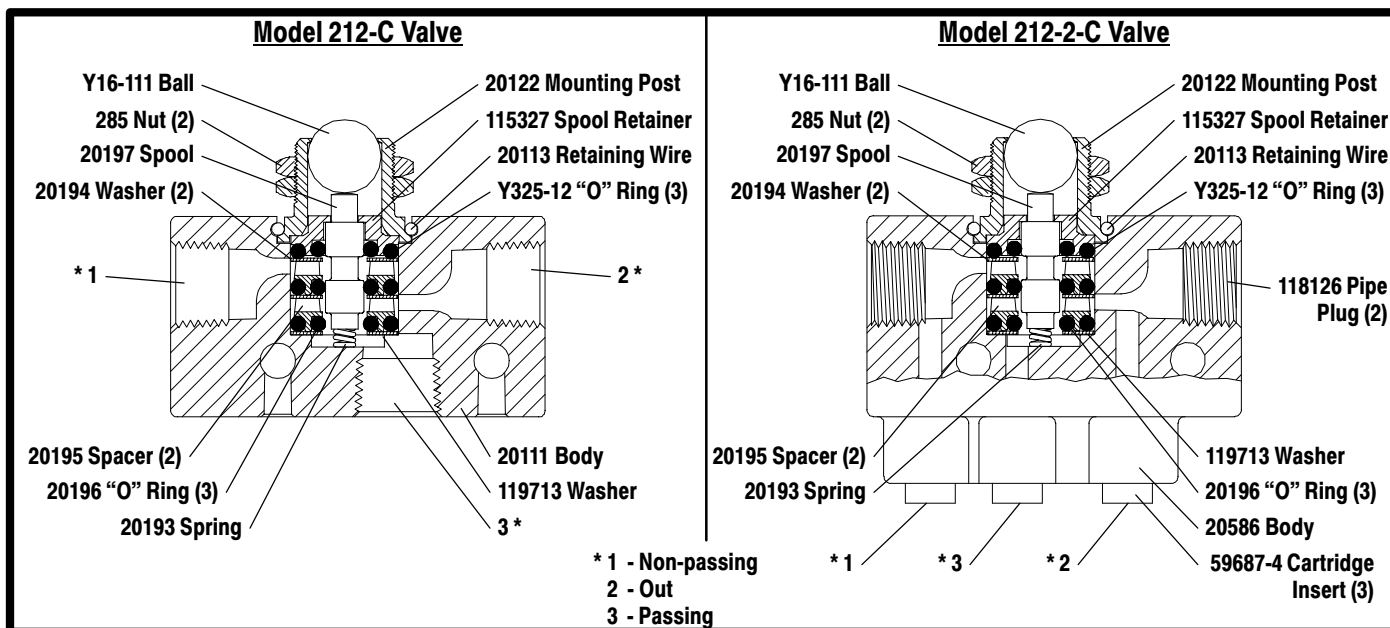


READ THIS MANUAL CAREFULLY BEFORE INSTALLING, OPERATING OR SERVICING THIS EQUIPMENT.

It is the responsibility of the employer to place this information in the hands of the operator. Keep for future reference.

Kits 59064 and 59064-1 are used in conjunction with model 59066-() 2 position selector switch operators and model 59067-() push button operators (standard Square "D" operators, class 9001). They allow construction of pneumatic control stations and panels for manual actuation and monitoring. This kit contains all necessary parts for the control of one valve.





SERVICE

In the event of a malfunction:

- Check alignment of valve on bracket or for bent bracket to be sure operator cam is fully actuating 212-C or 212-2-C miniature valve.
- Check (Y325-12 and 20196) "O" rings for wear or rupture.
- Check for excessive wear on pilot bushing of (115327) spool retainer.
- Check (20193) spring for breakage.

TESTING

- Apply pressure at port "1". No output should appear at ports "2" and "3".
- Depress (Y16-111) ball. Output should appear at port "2".

PANEL MOUNTING DIMENSIONS

